

SMART DRAFT™

POWERED BY  BarTrack



Glycol Ethernet Connectivity Flow

GLYCOL ETHERNET CONNECTIVITY FLOW

1.

Ensure the BarTrack BCM is plugged in



2.

Plug in the Ethernet cable into the BCM



3.

Ensure the BarTrack BCM is plugged in. Wait until you see a solid green light & a solid orange light illuminated before beginning the set up process.



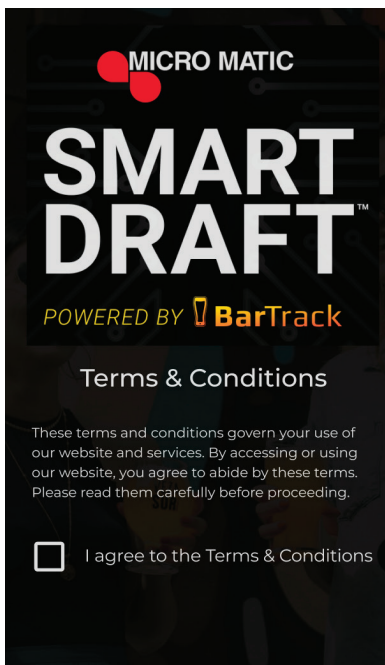
4.

Scan QR Code



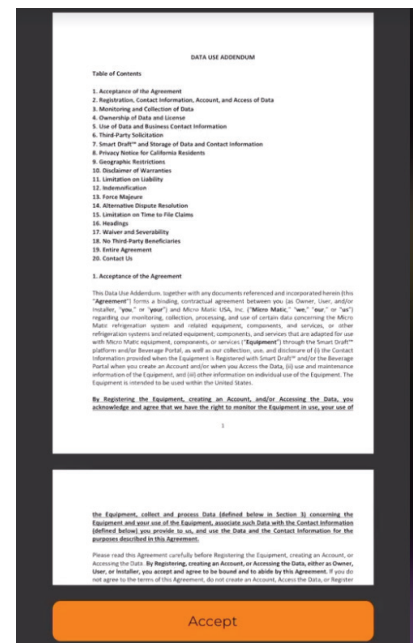
5.

Open Terms & Conditions



6.

Accept Terms & Conditions




GLYCOL ETHERNET CONNECTIVITY FLOW


7.

Choose User Type (Technician or Customer)

Welcome!

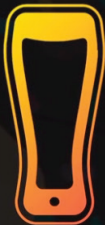
Tell us who you are

 I am a Technician
Here to complete the hardware setup process or diagnose equipment for a customer. >

 I am a Customer
Here to diagnose my equipment or activate a monitoring subscription. >

8.

Sign up / Sign in



BarTrack


Smart Draft™ System
Setup & Diagnostics

Sign up

I already have an account

9.

Log in with Email & Password

 BarTrack

Email address
Megan.yuska@bartrack.beer


Password
•••••

Log in with Email/Password

Forgot your password?

10.

Set up Hardware

 BarTrack

Email address

Password

Log in with Email/Password

Forgot your password?

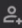
11.


Hardware Setup Customer Selection

Hardware Setup

Before getting started, please let us know whether this installation is for a new or existing customer.

If you are unsure, please select the **New BarTrack Customer** option

 New BarTrack Customer
Create a new account from the ground-up >

 Existing BarTrack Customer
Add hardware to an existing account >

Exit Hardware Setup

12.

Enter Establishment Name

Enter the name of the client's venue to get started.

Example - 'BarTrack Brewing'

Test Location

192.168.1.141 — Private

AutoFill Contact Done

"Locatio" Location Locations

q w e r t y u i o p

a s d f g h j k l

z x c v b n m

GLYCOL ETHERNET CONNECTIVITY FLOW

13.

Enter & Confirm Establishment Address

Confirm address:

Street address

8760 Stoneridge Dr

City

Manassas

State/territory

VA

Zip code

20111

<

Looks Good

14.

Provide Establishment POC Information

Please provide the main Point of Contact for the venue where you are installing the Smart Draft equipment

☐ I am the Point of Contact

Customer First Name

Joe

Customer Last Name

Smith

Customer Email

jsmith123@gmail.com

Customer Phone

2021235555

<

Next

15.

Confirm Customer Information

Please provide the main Point of Contact for the venue where you are installing the Smart Draft equipment

☐ I am the Point of Contact

* Customer First Name

Important

Please ensure all information provided thus far is correct.

You will not be able to return to this section once you proceed.

Cancel

Proceed

Phone number

+1 (703) 498-7693

<

Next

16.

Verify Equipment

BarTrack

1

Verify Equipment

Not Started

>

2

Activate System

Not Started

>

3

System Acceptance

Not Started

>

Finished

17.

Select Equipment Type – Select Glycol Chiller

To get started, please select the type of equipment associated with the QR code you scanned.

Gateway

Glycol Chiller

✓

Back-Bar Refrigerator

Direct-Draw Refrigerator

Soda Dispenser

Confirm

18.

Confirm Glycol Manufacturer – This will autopopulate

Select the manufacturer of your Glycol Chiller

Manufacturer

Micro Matic

Other...

Micro Matic

<

Next

GLYCOL ETHERNET CONNECTIVITY FLOW

20.

Confirm Equipment Type & Model Number – This will autopopulate

<

Model of your Micro Matic Glycol Chiller

The Model Number can included alphanumeric characters and is not case-sensitive. This can typically be found on the manufacturer's label on the equipment.

Equipment Type

1-Pump System

Model # (optional)

MMPP4301

Example - "MMPP4301"

Next

21.

Confirm Serial Number – This will autopopulate

<

Serial Number of your Micro Matic Glycol Chiller

The Serial Number can included alphanumeric characters and is not case-sensitive. This can typically be found on the manufacturer's label on the equipment.

Serial Number

A12345

Example - "C123456"

Next

22.

Enter Description of Installation Location

<

Select the manufacturer of your Glycol Chiller

Manufacturer

Micro Matic

Other...

Micro Matic

23.

Confirm Equipment

×

Add any additional equipment you would like to set up. When you are finished, proceed to the next step.

+ Add Equipment

Glycol Chiller #1

S/N - 3621

Confirm

24.

Activate System

BarTrack

Verify Equipment

Completed

2

Activate System

Not Started

3

System Acceptance

Not Started

Finished

25.

Identify Cooler Associated with Power Pack

Cooler Configuration

×

To begin the setup process, start by adding each Cooler and giving it a clear name. Don't worry - these names can always be updated later by the client if needed.

1

Cooler Name

Cooler #1

2

+ Add Cooler

Next

GLYCOL ETHERNET CONNECTIVITY FLOW

26.

Network Connection: Select Equipment to Connect

Connect Equipment to Network

Tap each device listed below and follow the on-screen prompts to guide you through connecting your equipment to the network.

Cooler #1:

Equipment List 0 of 1 Configured

Glycol Chiller
S/N - 3621

Next

27.

Select Connectivity Type - Ethernet

Network Setup Manager

Select how you would like to connect the Equipment to the Internet.

Ethernet
More Reliable - Physically wired connection, easier setup

Wi-Fi
More Versatile - Wireless connectivity, more complex setup

Cellular
More Independent - Utilizes mobile network connectivity

28.

Select Ethernet Connection Type (Choose Dynamic if Unsure)

What IP Address Assignment are you trying to make?

Dynamic
Basic - Flexible configuration that connects automatically with minimal setup

Static
Advanced - Complex network configuration that requires special instruction from the venue's IT department

TIP - If you are unsure, select Dynamic

29.

Ensure Successful Connection. Close this tab & Return to First Setup tab.

Dynamic Ethernet Connection

Be sure to review the information below before proceeding to the next step in the setup process

Ethernet Setup

1. Route the ethernet cable from the venue's network equipment
2. Ensure the ethernet cable is plugged into the venue's network equipment
3. Plug the ethernet cable into the port on the left-hand side of the device, near the power plug
4. Verify that proper cable management Best Practices have been adhered to
5. Click Check Device Connectivity to continue setup

Check Device Connectivity

30.

Wait While Device Connects to the Network

Attempting to verify the
Device Connectivity...

Estimated Time Remaining: 20 seconds

31.

Ensure Device Connectivity

Device Connectivity Check
was Successful!

GLYCOL ETHERNET CONNECTIVITY FLOW

32.

Confirm Device is assigned to correct cooler – Select Next

Activate System

Configure Coolers

Each device assigned in the previous step must be connected to the Internet. Select a Cooler to check the connection status or begin setting up each device.

Cooler List

1 of 1

Cooler #1

Complete

✓

<

Next

33.

Begin System Acceptance

BarTrack

Verify Equipment

Completed

>

Activate System

Completed

>

System Acceptance

Not Started

>

Finished

34.

Review Installation Summary & Press Submit

Install Summary

Location Details

VENUE NAME

Sample Restaurant

ADDRESS

8760 Stoneridge Dr

Manassas, VA 20111

Registration Recipient

POINT OF CONTACT

John Smith

Jsmith123@gmail.com

5551234567

Hardware

INSTALLED

Glycol Chillers

1

Submit

35.

Installation Completed!

✓

Installation Submitted

👍

Install complete

Thank you so much for your help in getting the hardware configured at **Sample Restaurant** — we couldn't have done it without you!

You can click **Back to Home** to return to the home screen or simply close your browser.

Back to home